



Company : Apache Energy Ltd

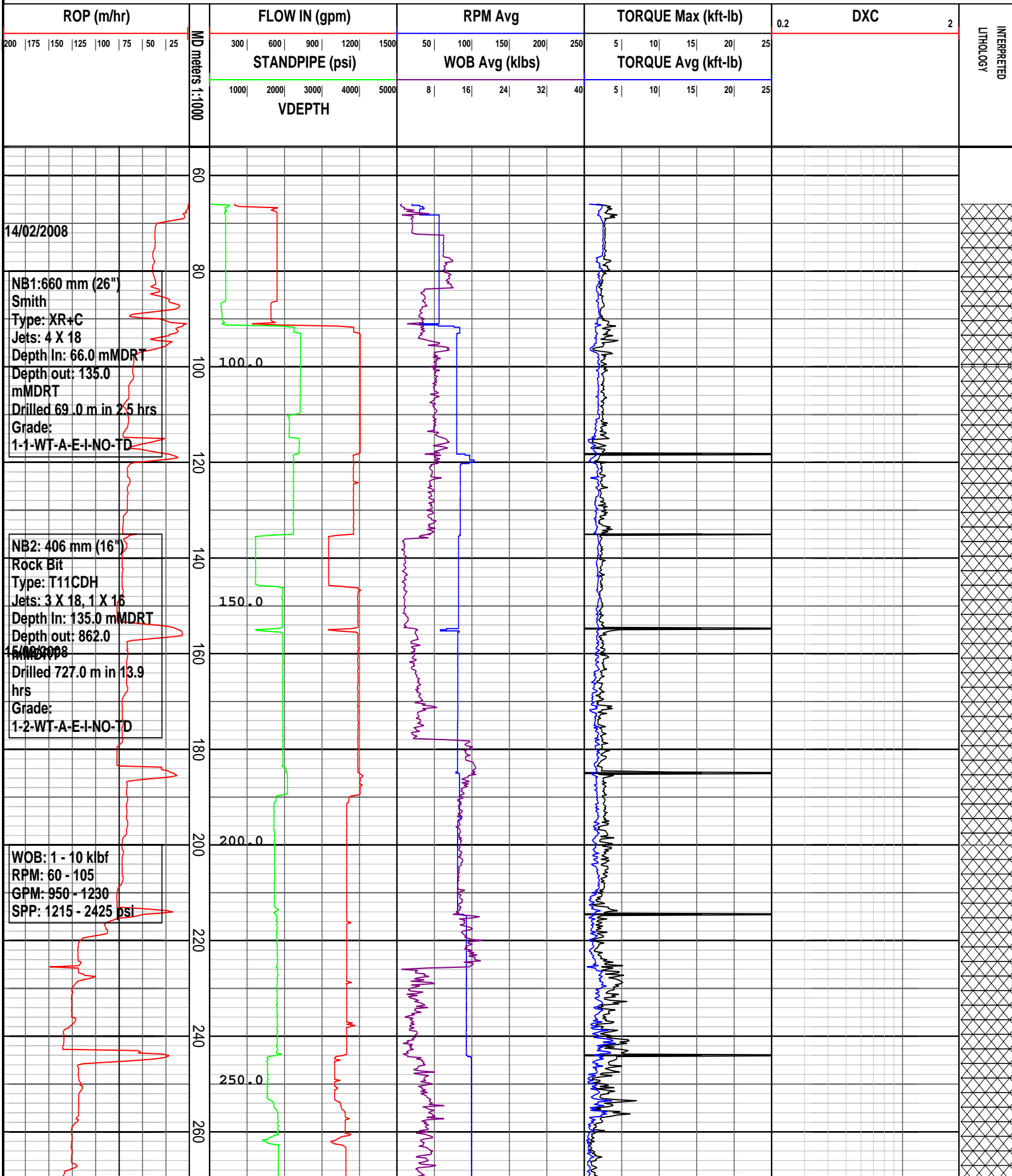
Well : Wasabi-1

Interval : 54.00 - 2184.03 meters

Created : 29/Feb/2008 7:30:12 AM

INTEQ

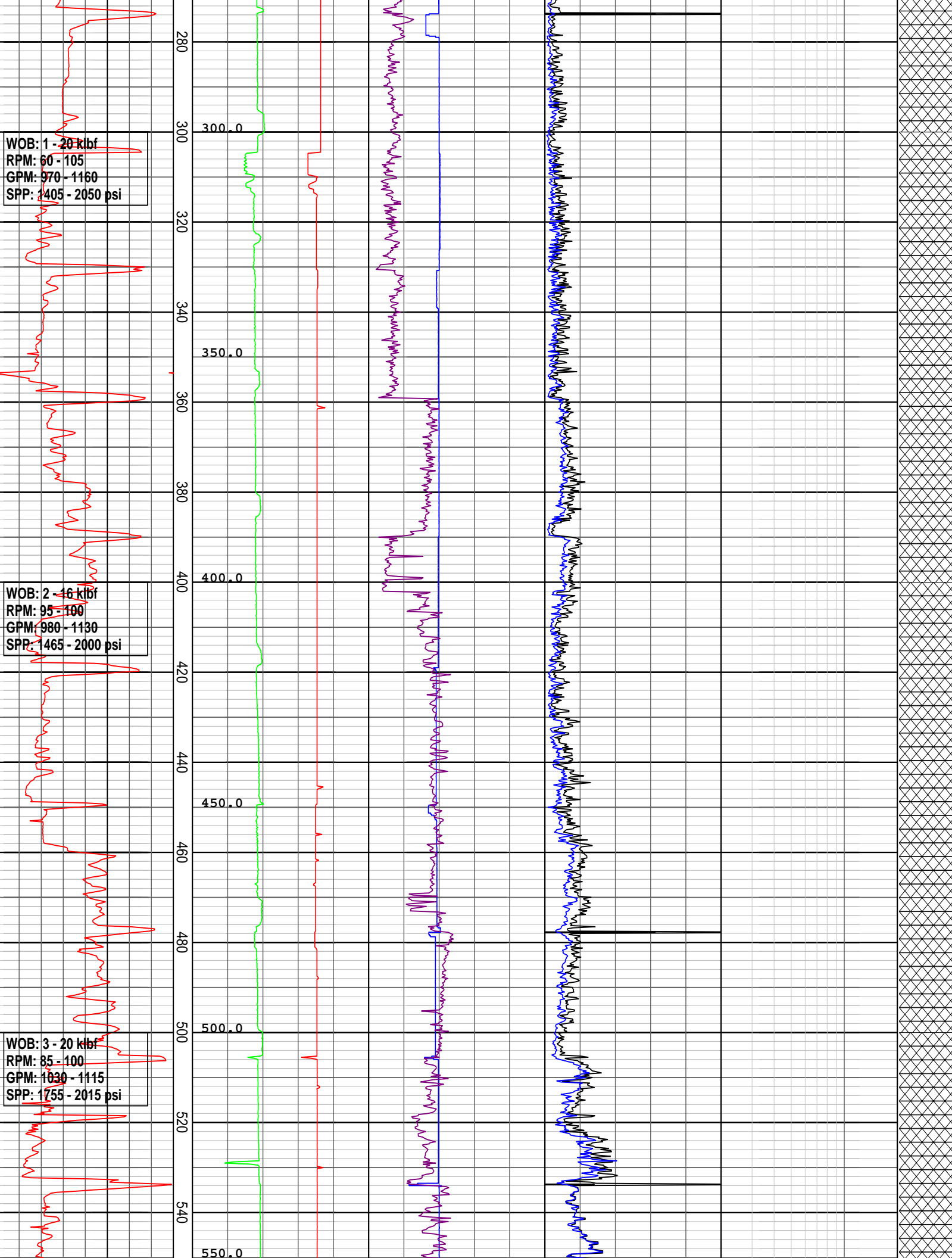
DRILLING DATA PLOT

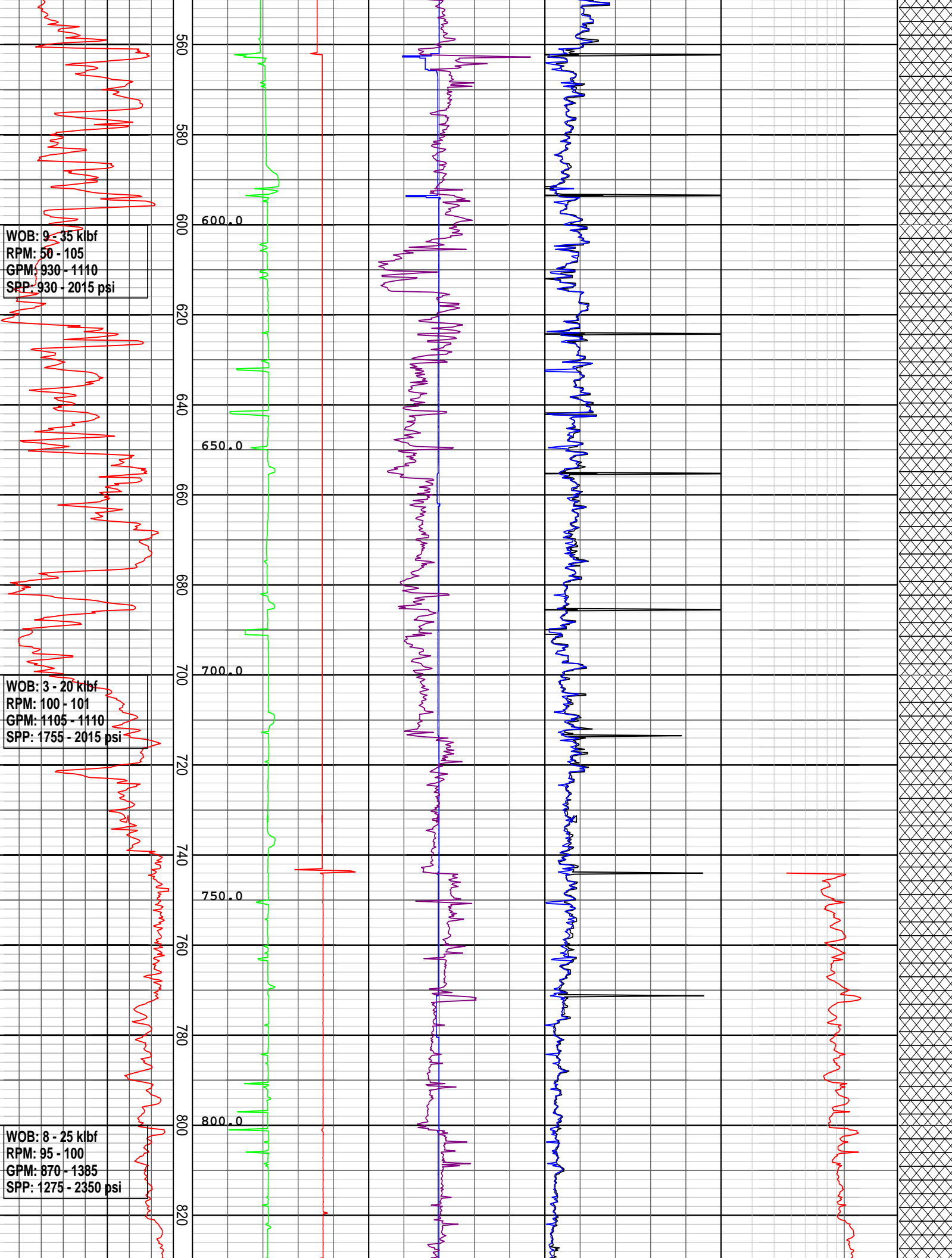


WOB: 1 - 20 kJbf
RPM: 60 - 105
GPM: 970 - 1160
SPP: 1405 - 2050 psi

WOB: 2 - 16 kJbf
RPM: 95 - 100
GPM: 980 - 1130
SPP: 1465 - 2000 psi

WOB: 3 - 20 kJbf
RPM: 85 - 100
GPM: 1030 - 1115
SPP: 1755 - 2015 psi





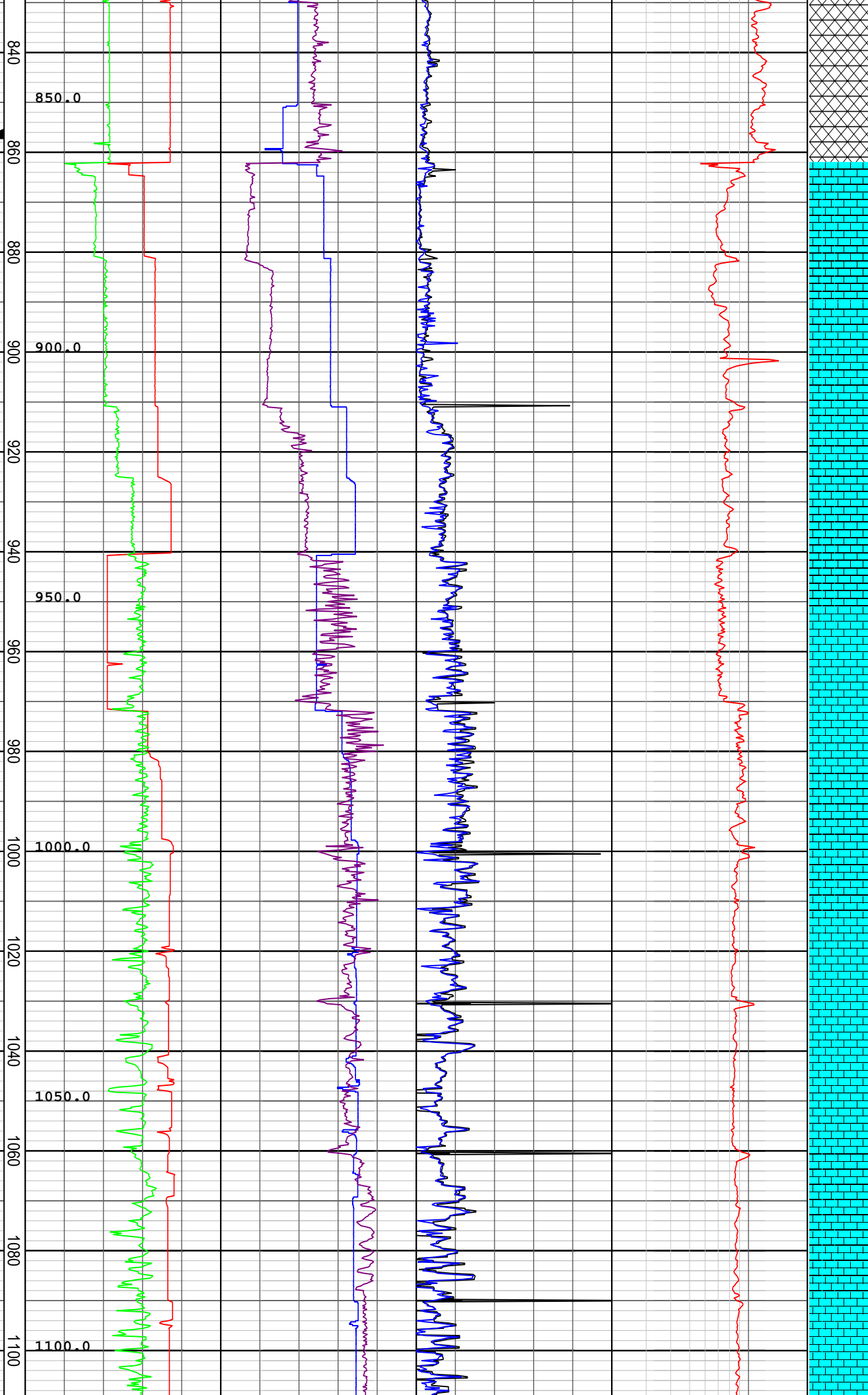
16/02/2008

Set 330 mm (13 3/8")
Csg @ 857.3 m

NB3: 308 mm (12 1/4")
Smith
Serial: SCC985
Type: PDC Fixed Cutter
Jets: 6 X18,
Depth In: 862.0 mMDRT
Depth out: 1797.0
mMDRT
WOB: 59-350 kbf in 34.8
RPM: 28 - 100
GPM: 633 - 1150
SPP: 1020 - 2226 psi

WOB: 8 - 33 kbf
RPM: 33 - 55
GPM: 630 - 1135
SPP: 2000 - 3170 psi

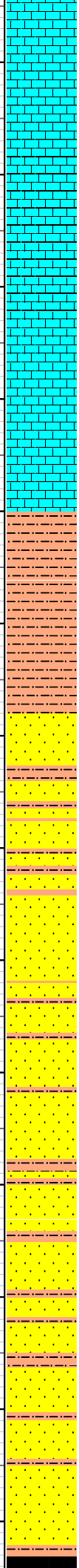
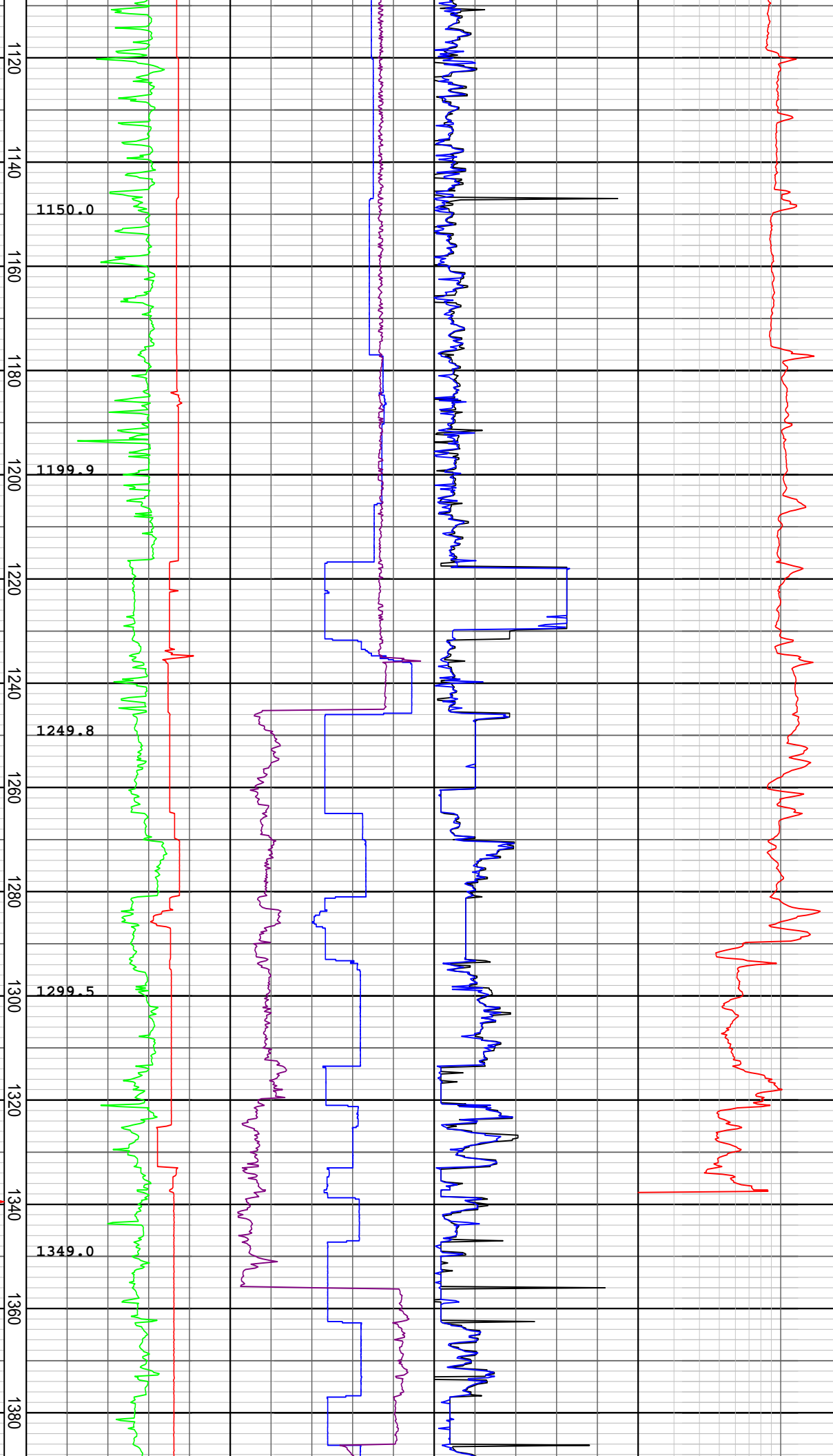
WOB: 20 - 33 kbf
RPM: 50 - 53



GPM: 1000 - 1150
SPP: 2120 - 3350 psi

WOB: 17 - 45 klb
RPM: 48 - 65
GPM: 1065 - 1145
SPP: 1255 - 3385 psi

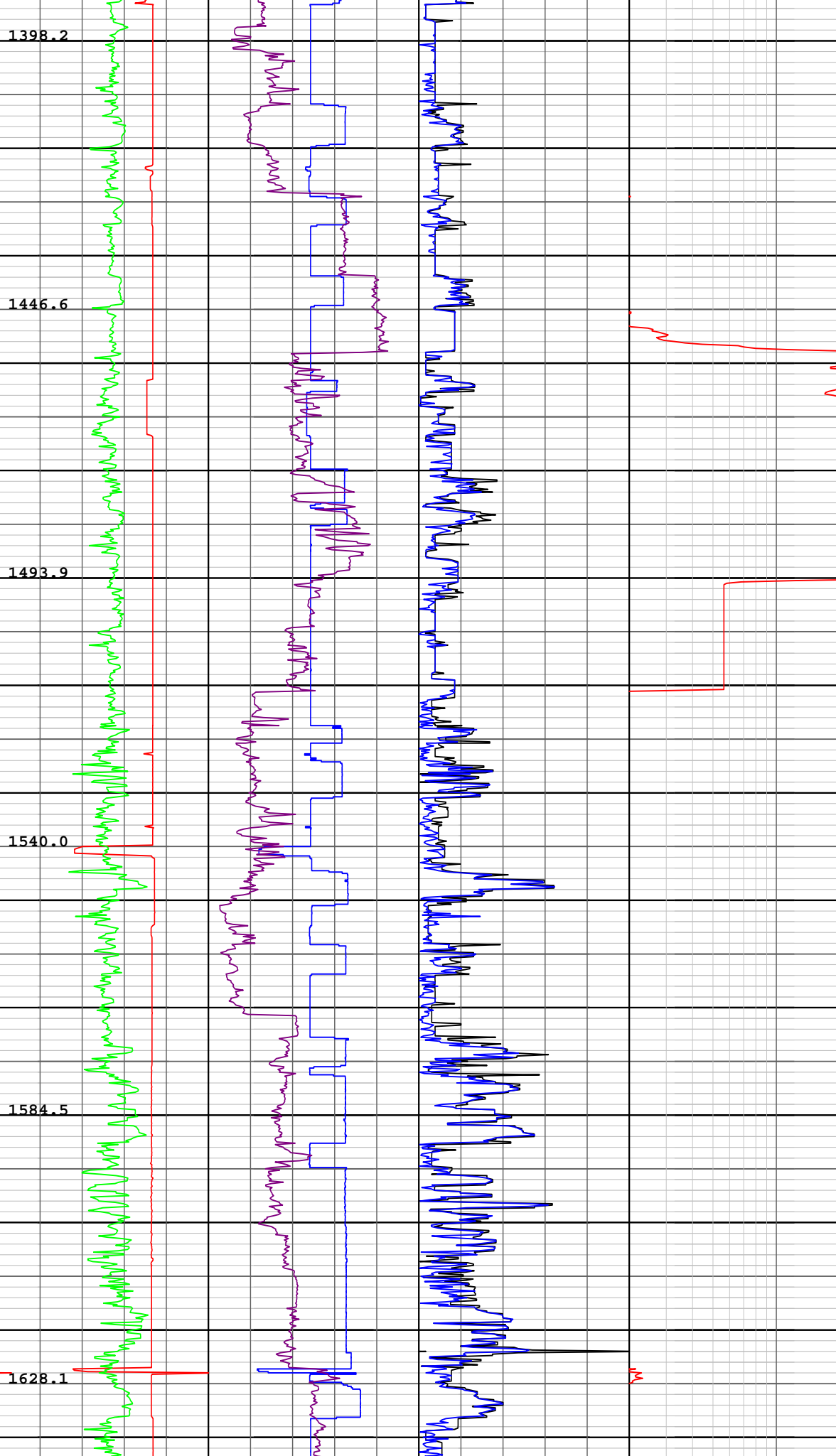
WOB: 4 - 38 klb
RPM: 36 - 65
GPM: 915 - 1645
SPP: 2145 - 3450 psi



24/02/2008

WOB: 2 - 35klbf
RPM: 22 - 45
GPM: 955 - 1115
SPP: 1825 - 3260 psi

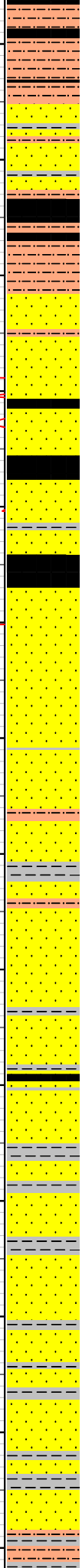
1400
1420
1440
1460
1480
1500
1520
1540
1560
1580
1600
1620
1640
1660



WOB: 22 - 45 klbf
RPM: 0 - 44
GPM: 1050 - 1105
SPP: 2170 - 3030 psi

WOB: 2 - 21klbf
RPM: 0 - 45
GPM: 545 - 1120
SPP: 1685 - 3545 psi

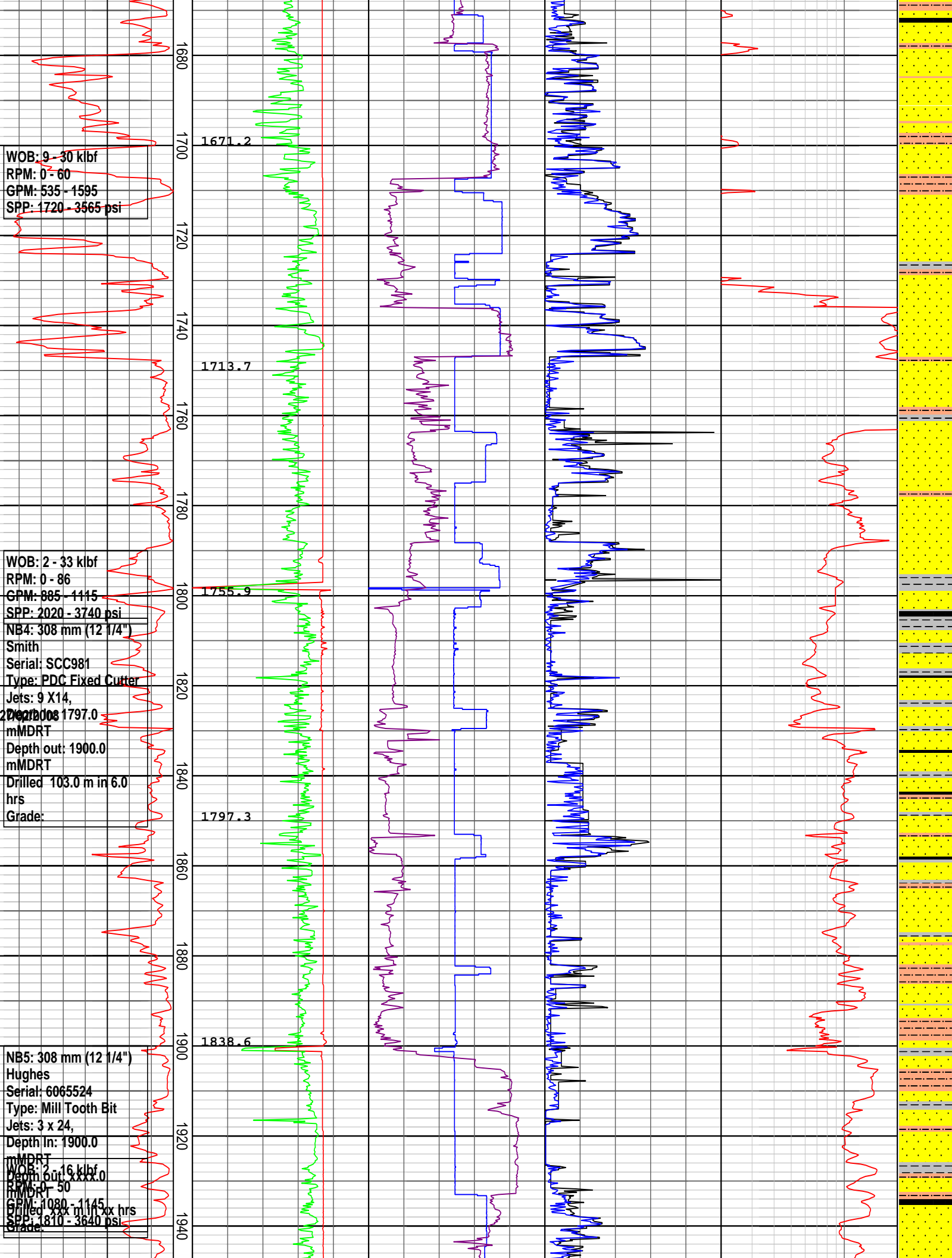
25/02/2008

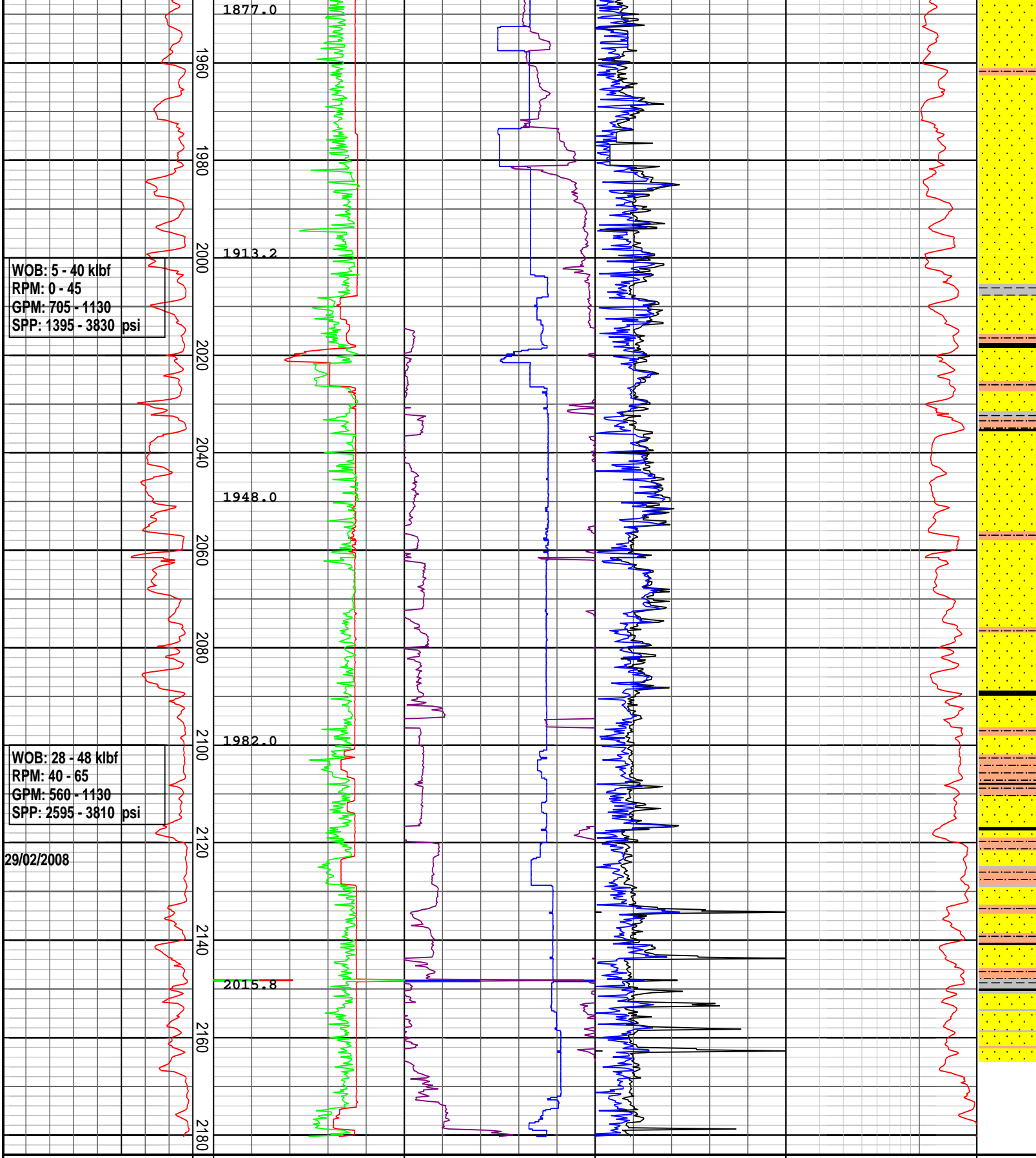


WOB: 9 - 30 klf
RPM: 0 - 60
GPM: 535 - 1595
SPP: 1720 - 3565 psi

WOB: 2 - 33 klf
RPM: 0 - 86
GPM: 885 - 1415
SPP: 2020 - 3740 psi
NB4: 308 mm (12 1/4")
Smith
Serial: SCC981
Type: PDC Fixed Cutter
Jets: 9 X14,
2022008 1797.0
mMDRT
Depth out: 1900.0
mMDRT
Drilled 103.0 m in 6.0
hrs
Grade:

NB5: 308 mm (12 1/4")
Hughes
Serial: 6065524
Type: Mill Tooth Bit
Jets: 3 x 24,
Depth In: 1900.0
mMDRT
WOB: 16 klf
Depth out: 1900.0
mMDRT
RPM: 0 - 50
GPM: 1080 - 1145
SPP: 1810 - 3640 psi
Grade:





DRILLING DATA PLOT

ROP (m/hr)	FLOW IN (gpm)	RPM Avg	TORQUE Max (kft-lb)	DXC	INTERPRETED LITHOLOGY
200 175 150 125 100 75 50 25	300 600 900 1200 1500	50 100 150 200 250	5 10 15 20 25	0.2	
MD meters 1:1000	STANDPIPE (psi)	WOB Avg (klbs)	TORQUE Avg (kft-lb)	2	
	1000 2000 3000 4000 5000	8 16 24 32 40	5 10 15 20 25		
	VDEPTH				